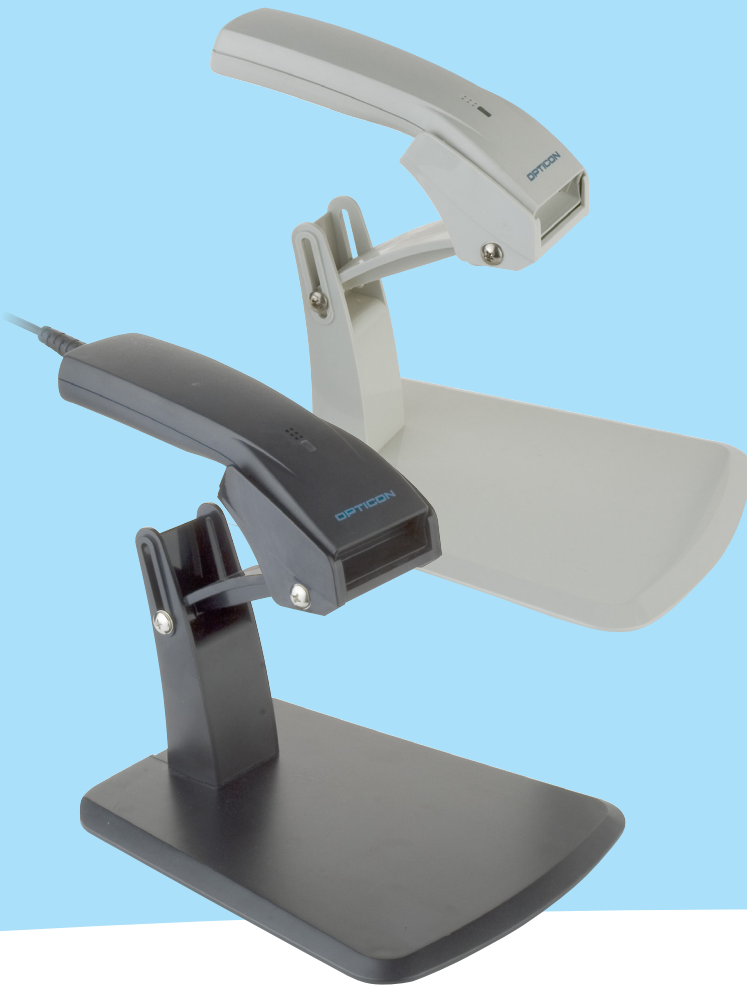


OPL-6845R

Laser Barcode Scanner



Highlights

- High performance laser scanner that scans 1D barcodes at 100 scans/second
- Ideal solution for retail point-of-sale (POS), inventory or logistics applications
- Integrated auto-trigger mode together with the dedicated stand enables hands-free operation
- Large base plate provides a stable platform and a clear working area on the desktop
- Durable – survives five foot drop to concrete
- IP 42 rating against dust and moisture
- Trigger modes: manual and auto-trigger
- Compact size and weight: 2.24" x 6.26" x 1.26" (WxLxD) and 3.2 ounces
- Communication interface: RS232, keyboard wedge or USB
- Available in black or white and the stand is included
- Backed by a two year warranty

OPR-6845R

Product Specifications

OPERATING INDICATORS

VISUAL: 1 LED (red/green/orange)

AUDIBLE: Buzzer

OPERATING KEYS

ENTRY OPTIONS: 1 scan key

COMMUNICATION

RS232: DB9 PTF connector with external power supply

KEYBOARD WEDGE: MiniDIN6 F/M connector

USB: Version 1.1, HID/VCP, USB-A connector

POWER

VOLTAGE REQUIREMENT: 5 V \pm 10 % (Keyboard Wedge and USB), 6 V (min. 4.5, max. 6.5 V) (RS232)

CURRENT CONSUMPTION: Maximum 250 mA

BARCODE SCANNER OPTICS

LIGHT SOURCE: 650 nm visible laser diode

SCAN METHOD: Bi-directional scanning

SCAN RATE: 100 scans/sec.

TRIGGER MODE: Manual, auto-trigger, stand detection

READING PITCH ANGLE: -35 to 0°, 0 to +35°

READING SKEW ANGLE: -50 to -8°, +8 to +50°

READING TILT ANGLE: -20 to 0°, 0 to +20°

CURVATURE: R>15 mm (EAN8), R>20 mm (EAN13)

MINIMUM RESOLUTION AT PCS 0.9: 5 mil (0.127 mm)

MINIMUM PCS VALUE: 0.45

DEPTH OF FIELD AT PCS 0.9, CODE 39:

39 mil (1.0 mm) 1.57 - 19.69 in (40 - 500 mm)

20 mil (0.5 mm) 0.79 - 13.78 in (20 - 350 mm)

10 mil (0.25 mm) 0.79 - 7.87 in (20 - 200 mm)

6 mil (0.15 mm) 0.79 - 3.94 in (20 - 100 mm)

5 mil (0.127 mm) 1.18 - 2.76 in (30 - 70 mm)

SUPPORTED SYMBOLOGIES

BARCODE (1D): JAN/UPC/EAN incl. add on, Codabar/NW-7, Code 11, Code 39, Code 93, Code 128, GS1-128 (EAN-128), GS1 DataBar (RSS), IATA, Industrial 2of5, Interleaved 2of5, ISBN-ISMN-ISSN, Matrix 2of5, MSI/Plessey, S-Code, Telepen, Tri-Optic, UK/Plessey

BARCODE (2D): Composite codes, MicroPDF417, PDF417

BARCODE (POSTAL CODES): Chinese Post, Korean Postal Authority code

DURABILITY

TEMPERATURE:

Operation: -23 to 122 °F (-5 to 50 °C)

Storage: -4 to 140 °F (-20 to 60 °C)

HUMIDITY:

Operation: 5 - 95% (non-condensing)

Storage: 5 - 95% (non-condensing)

AMBIENT LIGHT IMMUNITY:

Fluorescent: 3,000 lx max

Direct Sun: 50,000 lx max

Incandescent: 3,000 lx max

DROP TEST: 5 ft (1.5 m) drop onto concrete surface

VIBRATION TEST: 10 - 100 Hz with 2G for 1 hour

PROTECTION RATE: IP42

PHYSICAL

DIMENSIONS (WXHXD): 2.24 x 6.26 x 1.26 in (57 x 159 x 32 mm)

DIMENSIONS STAND (WXHXD): 6.29 x 7.48 x 9.64 in (160 x 190 x 245 mm) (excl. scanner)

WEIGHT BODY: Ca. 3.2 oz (90 g) (excl. cable)

WEIGHT STAND: Ca. 10.2 oz (290 g)

CASE: ABS, black or white

REGULATORY AND SAFETY

PRODUCT COMPLIANCE: CE, FCC, VCCI, RoHS, JIS-C-6802 Class 2, IEC 60825-1 Class 2, FDA CDRH Class II

ENCLOSED ITEMS

POWER SUPPLY: 100-240V/0.5A, 50/60 Hz, 6V/2A (for RS232)

STAND: (optionally sold separately)

MODELS

INTERFACE VERSIONS: RS232, Keyboard Wedge, USB

COLOR VERSIONS: Black, white

STAND INCLUDED



SBE Direct

30, rue de PENTHIEVRE - 75008 PARIS

TEL : 01. 42. 25. 23. 23. FAX : 01. 42. 25. 44. 00.

Site Web : www.sbedirect.com

Courriel : contact@sbedirect.com